



Rawhide's New Outpatient Clinic

Bringing proven experience and help to communities



Bart and Cherry Starr are joined by Rawhide youth as Rawhide's new outpatient counseling program is unveiled.

On May 1, Rawhide Boys Ranch was honored to have Bart and Cherry Starr announce the opening of a new prevention-based outpatient counseling program in Green Bay, Wisconsin. Outpatient counseling is an extension of the Rawhide continuum of care that already includes 24-hour residential care/group home, and foster care for court-referred and at-risk boys.

Rawhide's Youth and Family Counseling program provides individual, group, and family counseling to children, adolescents, adults, and families struggling with a variety of behavioral and

mental health issues, relational difficulties, or personal concerns. Recent studies show that teenagers in need of counseling are underserved, due to a variety of factors. In the few months that the Green Bay outpatient clinic has been open, over 100 families have already been helped.



Wes Johnson, Rawhide's outpatient therapist, integrates therapeutic counseling and Christian principles in his practice.

Rawhide's outpatient therapist at the Green Bay location, Wes Johnson, has 13 years of experience, specializing in adolescent, family, and men's issues. He also has expertise in the counseling areas of engagement and marriage, sexual addiction, anger management, assertiveness training, and promoting healthy masculinity.

"Our hope is that any youth or family struggling with behavioral issues will be able to access the rich history and knowledge of Rawhide that leads to sustained, positive change," stated John Solberg, Rawhide executive director.

"When choosing the Rawhide Youth and Family Counseling program in Green Bay, I believe families are responding to the reputation we have earned over the last 43 years," stated Solberg. "We look forward to building on this success with the opening of our next clinic in Appleton before the end of the year."

To learn more about Rawhide youth and family counseling visit:
www.rawhide.org/strongfamily
or call, toll-free 1-877-300-9101



In addition to the Green Bay clinic, outpatient clients have access to over eight horses and Rawhide's Equine Assistance Program (REAP) in an indoor riding arena. At left, a student participates in a therapy session with Wes Johnson, assisted by Lisa Marvin, animal care specialist.

Packer's KABEER GBAJA-BIAMILA, #94, speaks to Rawhide Youth



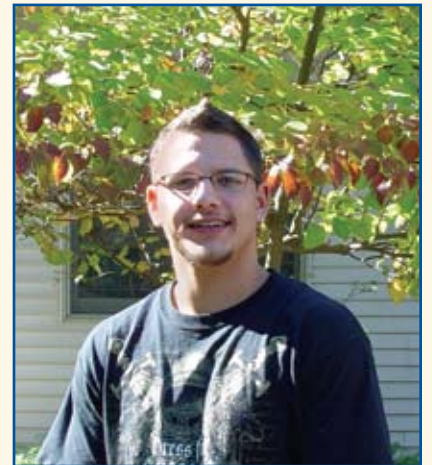
Rawhide students received encouragement from guest speaker, Green Bay Packer KABEER GBAJA-BIAMILA, #94.

On Friday, October 24, Rawhide youth were thrilled to have the Green Bay Packers' all-time sack leader, KABEER GBAJA-BIAMILA (KGB), #94, as their guest speaker. WORQ Radio (90.1 FM), Sports Faith Radio, sponsored a special radio interview format held at Starr Academy, Rawhide's high school. GBAJA-BIAMILA discussed his start in the NFL, how he met his wife, and his faith. He shared with students how God is working in his life both on and off the football field. Raised Muslim, GBAJA-BIAMILA shared his path to Christianity and encouraged listeners to let God change their life as his was. KGB is an active participant and supporter of charitable causes and speaks to many youth.

Rawhide Alumnus Miguel Muzquiz Applies What He Learned at Rawhide to His Life

Miguel Muzquiz first came to Rawhide in 2001. After completing the About Face Service Corps Program, he went into Rawhide's CATCH (foster care) program. There was a period of time after leaving Rawhide when he got into trouble, but he kept thinking about all the things he learned while at Rawhide. Miguel, happy with the lifestyle changes he has made, now uses the tools he learned from Rawhide to be a good parent to his three-year-old son, Trey.

Miguel recently visited Rawhide while accompanying guest speaker Pastor Mark Elizalde from Spirit of Life Church of God. Miguel has become active in his church, assisting with Bible studies, and is currently working for Metal Craft in West Bend, Wisconsin. He is scheduled to come back to Rawhide in November as a guest speaker to students at Starr Academy, Rawhide's on-grounds school.



The #15 Rawhide League Celebrates 3rd Anniversary

On October 9 the #15 Rawhide League celebrated their 3rd anniversary. Members enjoyed a special luncheon in recognition of their decision to include Rawhide in their planned giving. New members were recognized and they received a commemorative membership pin.



Attendees included Dr. Tom and Pamela Winek and Mrs. Dorothea R. Winek.

Planned giving is a commitment an individual makes *today* for a *future gift* to loved ones and charities they care about most. Planned gifts are popular because they can provide valuable tax benefits and/or income for life. Whether a donor uses cash or other assets, the benefits of funding a planned gift can make this type of charitable giving very attractive to the donor and greatly benefit the young men at Rawhide.



Xao, a 15-year-old student, shares his Rawhide story with attendees.

If you would like more information on planned giving (bequests, annuities, charitable remainder trusts) or learning how you can become a member of the #15 Rawhide League, visit our website, www.rawhide.org or call Rawhide toll free at 1-888-745-7444.

Points of View on Rawhide

"Our agency has been extremely pleased with services at Rawhide. It really is an excellent program."

Melissa Clark, Social Worker, Oneida County

Sign up to receive Rawhide newsletters and e-mail now!

www.rawhide.org